

17th June 2021

ASX Market Announcements

FIELD EXPLORATION AT HALLS CREEK IN WA COMMENCES

GOLD AND BASE METAL PROJECT

Kaili Resources Limited (“Company”) is pleased to announce that the planned field based exploration at the Halls Creek will commence on the 19th June 2021 barring unexpected access or travel restrictions due to Covid-19 that may be imposed by Government.

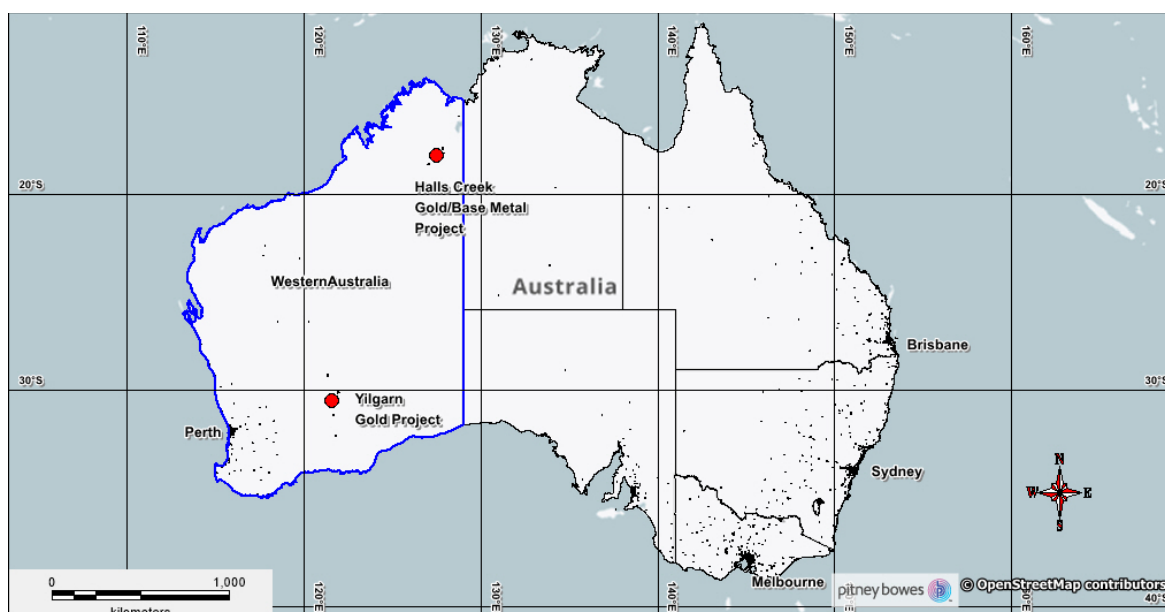


Figure 1: Location of Halls Creek Gold/Base Metal Project and Yilgarn Gold Project

**E 08/5112 (Black and Glidden), 5113 (Carrington), 5114(Sandy Creek) and 5115 (Wild Dog)
100% interest**

The four (4) tenements were granted to Kaili Iron Pty Ltd (100% subsidiary of Kaili Resources Limited) in August 2018. The Company’s study of available historic data has generated some very good gold and base metal targets with field testing originally proposed for March Quarter 2020. However, the advent of COVID-19 with the related travel and access restrictions imposed by the Government left the Company with a limited 2020 field season to implement the planned exploration program.

The present exploration program will comprise a series of foot and vehicle traverses in combination with grid based soil sampling across targets generated in all four tenements. The original plan was to utilise helicopter support for part of the program however, there is no availability in the time frame proposed. The Company has decided to implement the program by vehicle rather than further delay the field work.

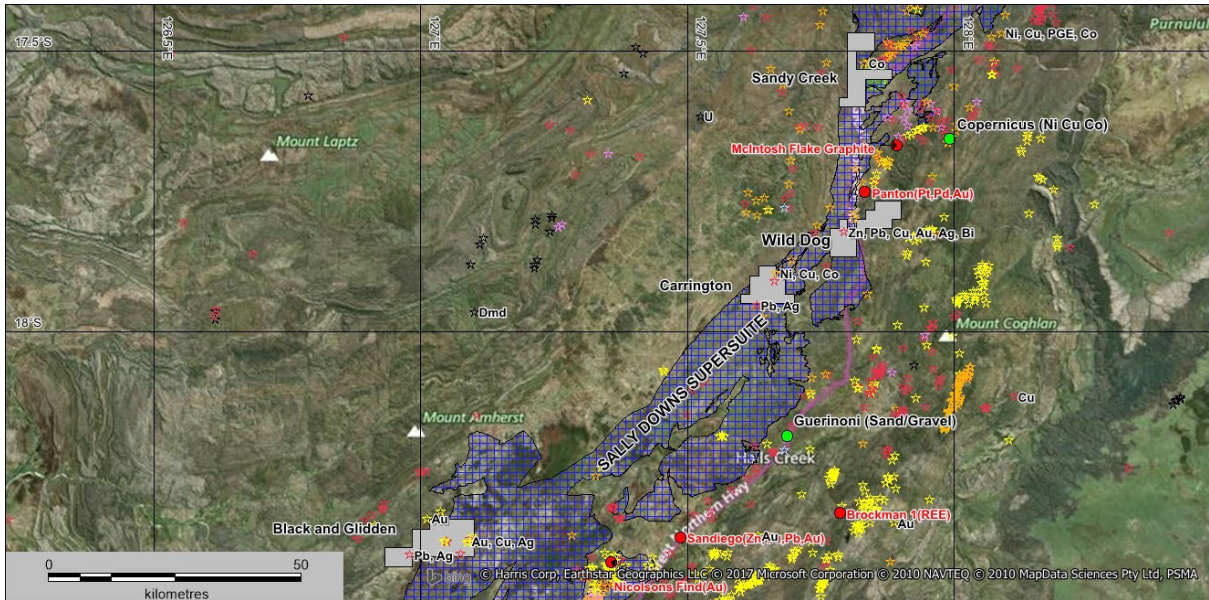


Figure 2: Halls Creek Project - 4 granted tenements (grey) located near Halls Creek

Competent Person Statement

The information in the report above that relates to Exploration Results, Exploration Targets and Mineral Resources is based on information compiled by Mr Mark Derriman, who is the Company's Consultant Geologist and a member of The Australian Institute of Geoscientists (1566).

Mr Mark Derriman has sufficient experience that is relevant to the style of mineralization and type of deposit under consideration and to the activities which he is undertaking to qualify as a Competent Person as defined in the 2012 Edition of the Australasian Code for Reporting of Exploration Results, Exploration Targets, Mineral Resources and Ore Reserves. Mr Mark Derriman consents to the inclusion in this report of matters based on his information in the form and context in which it appears.

Forward-Looking Statement

This document may include forward-looking statements. Forward-looking statements include, but are not limited to, statements concerning planned exploration program and other statements that are not historical facts. When used in this document, the words such as "could", "plan", "estimate", "expect", "intend", "may", "potential", "should" and similar expressions are forward-looking statements. Although Kaili Resources Limited believes that its expectations reflected in these forward looking statements are reasonable, such statements involve risks and uncertainties and no assurance can be given that actual results will be consistent with these forward-looking statements.

Authorised by:

Long Zhao

Executive Director/Company Secretary

T : +61 2 9264 6288

E : contact@kailigroup.com.au