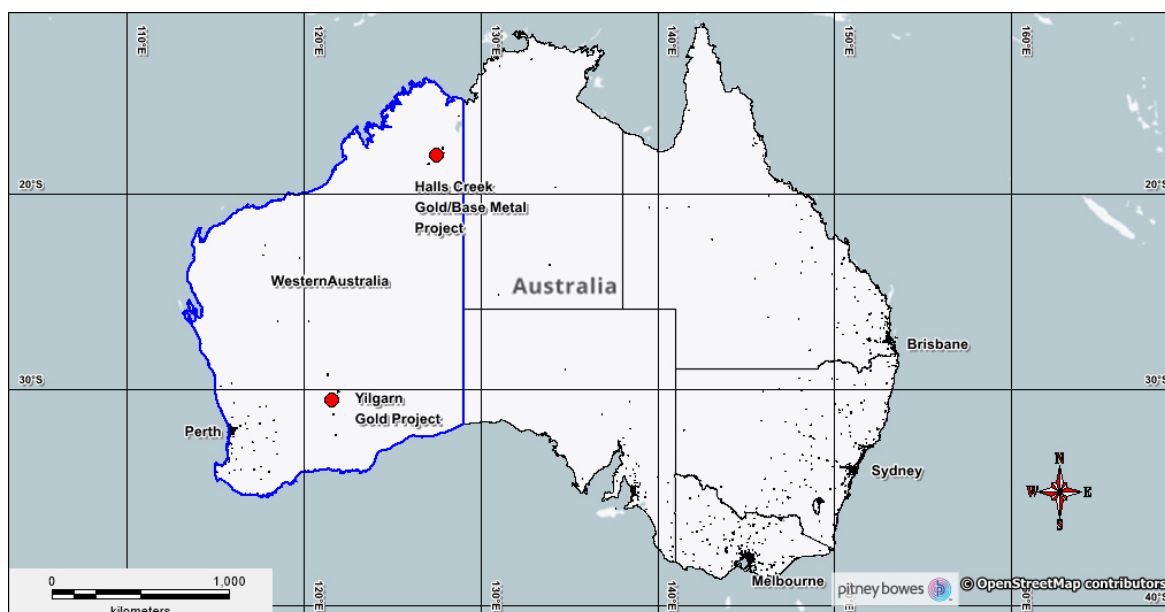


2 July 2021

ASX Market Announcements

## COMPLETED FIELD EXPLORATION FOR GOLD AND BASE METALS AT HALLS CREEK WA

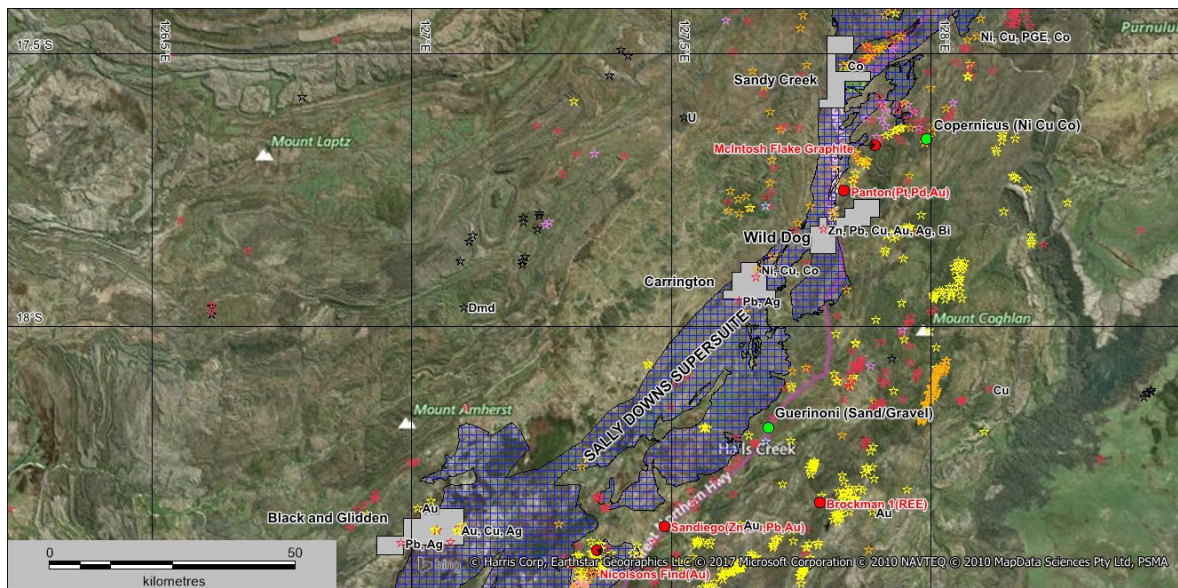
Kaili Resources Limited (“Company”) is pleased to announce that field based exploration at the Halls Creek Gold and Base Metal Project was completed on 1 July 2021 with no travel or access restrictions because of the current COVID-19 pandemic imposed by the WA Government. A total of 454 soil samples and 35 rock samples were collected across all four tenements, E08/5112 (Black and Glidden), 5113 (Carrington), 5114 (Sandy Creek) and 5115 (Wild Dog), 100% held by wholly owned subsidiary Kaili Iron Pty Ltd.



**Figure 1: Location of Halls Creek Gold/Base Metal Project in WA**

Study of available historic data has generated some very good gold and base metal targets with field testing originally proposed for the March Quarter 2020. However, the advent of COVID-19 with the related travel and access restrictions imposed by the Government left the Company with a limited 2020 field season to implement the planned exploration program.

The current completed field exploration program comprised a series of foot and vehicle traverses in combination with grid based soil sampling across targets generated in all four tenements. A follow up field exploration will likely involve a component of helicopter support to access the more remote parts of the tenements.



**Figure 2: Halls Creek Project showing the 4 granted tenements (grey) located in the vicinity of Hall Creek**

The soils sampling comprised a series of E-W traverses across the target areas with samples collected every 50 m along the sampling lines. The samples will be initially scanned using the Company's Olympus Delta then despatched to the ALS laboratory in Perth. The samples will be picked up from Halls Creek by GVR transport as soon as practical having regards to current COVID-19 travel restrictions in WA and taken to Perth. Given the heavy workloads in the geochemical laboratories at present the turn around time is expected up to 4 weeks. In addition, 35 rock samples were also collected and will also be transported to Perth. Appropriate QAQC was applied to the sampling regime.

#### **Competent Person Statement**

*The information in the report above that relates to Exploration Results, Exploration Targets and Mineral Resources is based on information compiled by Mr Mark Derriman, who is the Company's Consultant Geologist and a member of The Australian Institute of Geoscientists (1566).*

*Mr Mark Derriman has sufficient experience that is relevant to the style of mineralization and type of deposit under consideration and to the activities which he is undertaking to qualify as a Competent Person as defined in the 2012 Edition of the Australasian Code for Reporting of Exploration Results, Exploration Targets, Mineral Resources and Ore Reserves. Mr Mark Derriman consents to the inclusion in this report of matters based on his information in the form and context in which it appears.*

#### **Forward-Looking Statement**

*This document may include forward-looking statements. Forward-looking statements include, but are not limited to, statements concerning planned exploration program and other statements that are not historical facts. When used in this document, the words such as "could", "plan", "estimate", "expect", "intend", "may", "potential", "should" and similar expressions are forward-looking statements. Although Kaili Resources Limited believes that its expectations reflected in these forward looking statements are reasonable, such statements involve risks and uncertainties and no assurance can be given that actual results will be consistent with these forward-looking statements.*

#### **Authorised by:**

**Long Zhao** - Executive Director/Company Secretary

T : +61 2 9264 6288 E : [contact@kailigroup.com.au](mailto:contact@kailigroup.com.au)